



OPTIMA

your product development partner

NEWS

Summer 2008



Time Limited Offer - 50% off Pro/ENGINEER Mechanical Offer

Pro/ENGINEER Mechanical gives designers the power to understand structural and thermal product performance 'on the desktop', before resorting to costly, time consuming physical prototyping.

Pro/ENGINEER Mechanical gives you the freedom to explore new ideas and variants, optimise your designs, and you can be fully confident that your final product will behave as expected. Best of all, Pro/ENGINEER Mechanical is easy to learn and use—which means you can put the power of structural and thermal analysis into the hands of any mechanical engineer and designer.

By gaining early insight into product behaviour, you can vastly improve product quality while saving time, effort and money.

Companies like Roger Bullivant Limited, which is the largest foundation piling company in the UK use Pro/ENGINEER Mechanical as part of their design process. Peter Hickson, Design Engineer said "We use Pro/ENGINEER Mechanical as part of our design process. The type of industry we are in means that the structures we design are highly customised and subject to substantial loading. This tool allows us to ensure the integrity of the design and produce more efficient machines. It also allows us to save weight in critical areas ensuring optimum structural value for weight in our designs. Pro/ENGINEER Mechanical is an important design aid in ensuring RBL maintains its competitive edge with the plant and equipment designed for the company's varied business activities

If you are on active maintenance you can purchase Pro/ENGINEER Mechanical for only £2250!!



ROGER BULLIVANT

This offer ends on the 26th September. If you would like to find out any more or arrange a demonstration please contact us on 01623 621619 or email info@optima-design.co.uk.

New Website Launch



Optima Recruitment, a division of Optima Design have just launched their website. Specialising in Engineering recruitment, in particular the Pro/ENGINEER sector we can use our years of Engineering experience to find you the right candidate or the right job.

For more information to see how we can be of help visit www.optima-recruitment.com call us on 01623 621619 or email us at info@optima-recruitment.com

www.optima-recruitment.com

Sublime Designgroup



Concept Generation

Design Development

Engineering Design

Physical Analysis

Design for Manufacture

CAD Modelling

Due to continued expansion Sublime have recruited three new designers and draughtsmen. Working for clients such as BAE Systems and Rolls Royce, our newest team members have enabled even faster response to resource demand.

To discuss outsourcing your design and engineering projects contact Clare Warren on 01623 621619 or clarew@sublime-design.co.uk

www.optima-design.co.uk

General office number 01623 621 619

Training bookings 01623 672 082

info@optima-design.co.uk

Support direct dial 01623 672 088

Sales direct dial 01623 672 080

New Module - Pro/ENGINEER Tolerance Analysis Extension

Analyse and Control Tolerances

To deliver high quality products to market faster, product designers need to design for manufacturability. Not only must a product look good on the computer screen, it must fit together on the shop floor once manufactured. This requires incorporating manufacturing variance information early in the design process. Pro/ENGINEER Tolerance Analysis Extension (TAX) gives you the power to analyse geometric tolerance stack-ups and gaps. Now you can quickly analyse and document geometric tolerances directly on the CAD model. With Pro/ENGINEER you can improve your ability to design for manufacturing and easily streamline your detailed design and verification and validation processes.

Benefits

- Quickly analyse a model for its true statistical variation, sigma quality, as well as individual dimension contributions and sensitivities
- Easily incorporate GTOL and dimensional tolerances directly in the CAD model. 1-D tolerance loops are managed in an assembly-level saved ToleranceAnalysis
- Improve design for manufacturability, reduce time-to-market, improve product quality, and decrease cost
- Six Sigma design methodologies to ensure design quality

Feature and Specifications

- Easy-to-Use Capabilities
- 1D tolerance loops
- Tolerance stack-ups
- Automatic validation of dimensions and dimension loop
- Interactive visualisation of the tolerance loop
- Profile and position GTOLS supported
- Tolerance analyses saved with Pro/ENGINEER model
- Part or assembly-level management of tolerance analyses
- Ability to interactively modify tolerance values

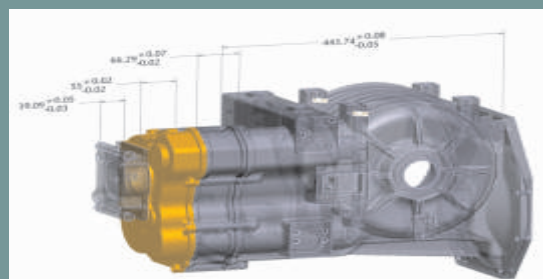
Powerful Analysis

- Contribution and sensitivity analysis
- Configurable biasing of pin/hole joints
- Worse-case and statistical analysis
- Reference driving as well as annotation dimensions

Results

- Contribution and sensitivity output plots
- Automatically generated HTML results report
- View worst case and statistical distributions
- Mean and standard deviation
- Dynamic display of results within the Tolerance Analysis Feature
- Reference driving as well as annotation dimensions

For more information or a demonstration please call us on 01623 621619 or email info@optima-design.co.uk or you can see a demo on webcast



Winners

In our recent on-line survey we gave away 3 Space Navigators from 3D Connexions. These devices are proven to reduce mouse clicks by up to 50% and improve productivity by 30%. The three lucky winners were:

Mark Bagley – Diam International Limited
Robert Sam – Lewmar Marine Ltd
Mike Corristine – KMF (Precision Sheet Metal) Ltd

Keep an eye on our website for opportunities to win
www.optima-design.co.uk

Free Assistance

Free Online Audits

Improve your efficiency and organisation, reduce technical difficulties and access colour maps and standard parts.

Free Workshops

Free one day workshops for all existing maintenance customers.

If you are interested in either free service please contact alexh@optima-design.co.uk

Wildfire 4.0

By now you probably know that Wildfire 4.0 is well and truly here. Did you know that PTC have:

- Spent over \$100 Million R&D investment in Pro/ENGINEER Wildfire 4.0 Development Cycle
- Dedicated 175 Man-Years of New Development
- Released 4 new exciting Pro/ENGINEER modules!
- REDUCED Memory footprint by 6.6 % - so it's quicker!!
- Increased Mean Time to Failure by 17%
- Increased Mean Time to Serious Defect by 96%

The net effect of all of these mean that Pro/ENGINEER Wildfire 4.0 is the most powerful versions of Pro/ENGINEER released and perhaps more important to many users, more stable.

Some of the new features in Wildfire 4.0 include the a Auto Round.™ feature that removes the repetitive tasks and reduce the time to create round features on your model. Pro/ENGINEER analyses the selected edges and then creates an optimal sequence of round features. For a rounding exercise that would take an intermediate user 90 minutes or an expert user 20 minutes to accomplish, Auto Round can complete the entire task in 40 seconds!

Smarter large assembly management with features like automatic memory management for fast, on-demand retrieval of the large assemblies and automated selection of required levels of detail for assembly models. You will see up to 40% less memory consumption! The usability of simplified representation preview is also improved with a new Reference Viewer, clearer indication of active components, and the part/assembly replacement of any component.

Faster surface editing allows you to edit surfaces faster and easier by simply picking points on the surface and manipulating the contour and geometry with a drag of the mouse. The surface control point editing allows multi-resolution editing (lightweight editing on dense surfaces), surface smoothing and variable connection transitions, and preservation of surface edits after subsequent boundary edits.

Modules that have also been added are

- Pro/ENGINEER Rights Management Extension that allow you to share your IP so that is protected from unauthorised use and modification.
- Pro/ENGINEER Wildfire 4.0 Manikin Extension gives you the ability to design products with human factors in mind.
- Pro/ENGINEER ECAD-MCAD Collaboration Extension enables you automatically identify incremental changes between the MCAD and ECAD versions of a PCB board design and enables associative interface between MCAD and ECAD views to resolve problems.
- Pro/ENGINEER Tolerance Analysis Extension – more information in this edition of the newsletter.

Where can I see Wildfire 4.0?

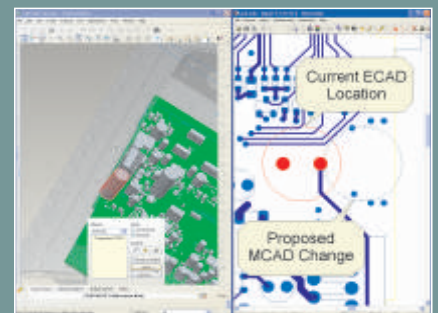
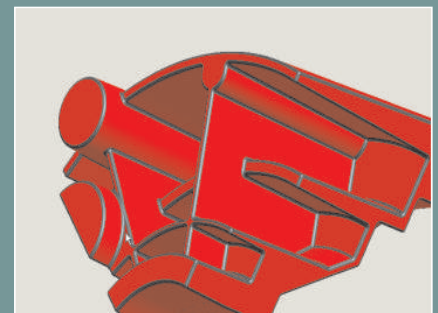
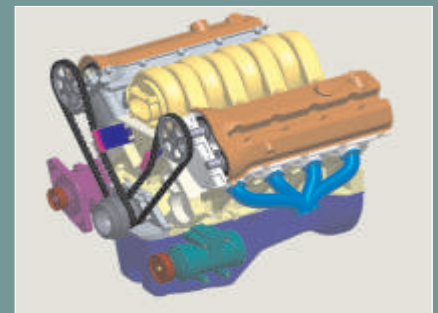
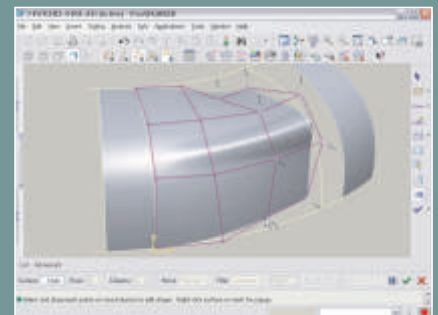
Optima will be holding seminars and webinars throughout the year for more information on dates please visit our website www.optima-design.co.uk/aboutus/news.html or to see an on-line tour visit http://www.optima-design.co.uk/proe_wf4_tour.html

How can I get Wildfire 4.0 CD's?

As of this release PTC do not automatically ship CD's. To get your Wildfire 4.0 simply go to the link below and either download or order your CD's.

<http://www.ptc.com/support/proengineer.htm>

For any further assistance please contact us at 01623 621619 or email us at info@optima-design.co.uk



Pro/INTRALINK – What are my options?

As most of you who use Pro/INTRALINK 3 you will probably be aware that the product was due to be retired at the end of June 2008. Due to customer demand the product will now be covered until the end of June 2009 and retired after this date. In order to give customers the choice PTC are giving customers the option to have extended support on this product that gives access to maintenance releases in addition to standard support on this retiring product.

What is the cost of extended support?

The standard support on whichever Pro/INTRALINK product you use remains the same as last year. The cost of the extended support is 10% of the list price of the software and will run to the end of June 2009 as a maximum.

Can I continue to use Pro/INTRALINK 3.x?

Yes you can use Pro/INTRALINK 3.x as long as you want but the product is no longer being developed and eventually it will not be compatible with the latest versions of Pro/ENGINEER.

What other options are available to me?

As part of your active maintenance agreement you get access to the latest version of Pro/INTRALINK which is version 9.0 (9.1 is due soon). This is based on Windchill technology which is a web based solution. You can also upgrade to PDMLink and ProjectLink that gives you even more powerful functionality.

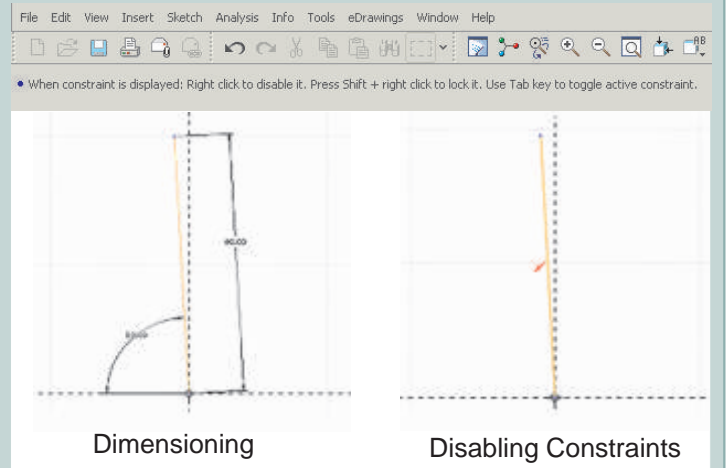
For more information please contact us on 01623 621619 or email us at info@optima-design.co.uk



Have you ever tried to draw a line at 88 degrees in sketcher mode? It automatically snaps to the vertical constraint and you then have to re-position it. Most designers will draw the line at 70 degrees and then edit the number to 88 degrees.

Don't worry; there is a very simple solution to this problem. You can disable constraints by clicking the right-hand mouse button once when the constraint shows in red.

If you need to lock a constraint, you can do this by pressing shift + right click when the constraints show in red.



iPod Competition - Guess the hairs on the spider



Enter our great Animation prize draw for a chance to win amazing prizes.

You could win an iPod and a 25% discount off any True2Life Realtime Simulation Product for your employer.

This could be an animation of your latest product range, a simulation of a mechanical scenario, an online configurator to boost your direct sales through web3D online, or any other 2D or 3D digital content project.

All you have to do to win is correctly guess the number of hairs on the super furry spider found at

<http://www.true2life.co.uk/html/spider-competition.php>

Email your best guess to us at spider@true2life.co.uk

Be sure to download the True2Life viewer to ensure you can view the spider fully. Terms and conditions apply.



Optima at Instrumentation 08, Aberdeen

3-4 September @ Aberdeen Exhibition & Conference Centre (AECC)

This biennial exhibition brings together companies who supply products and services specific to the offshore industry plus others who represent processing, power generation, paper, distilling, water and waste, and marine engineering in north east Scotland.

For more information about the event, please visit www.instrumentation.co.uk

Webinars

1st Monday of Every Month

2.00pm - Introduction demonstration of Pro/ENGINEER

Monday 15th September -

2.00pm - Interactive Surface Design Extension (ISDX)

Monday 20th October -

2.00pm - Mathcad and Isodraw

Monday 17th November - 2.00pm - Advanced Assembly Extension and TOL

Monday 15th December - 2.00pm - Expert Framework Extension